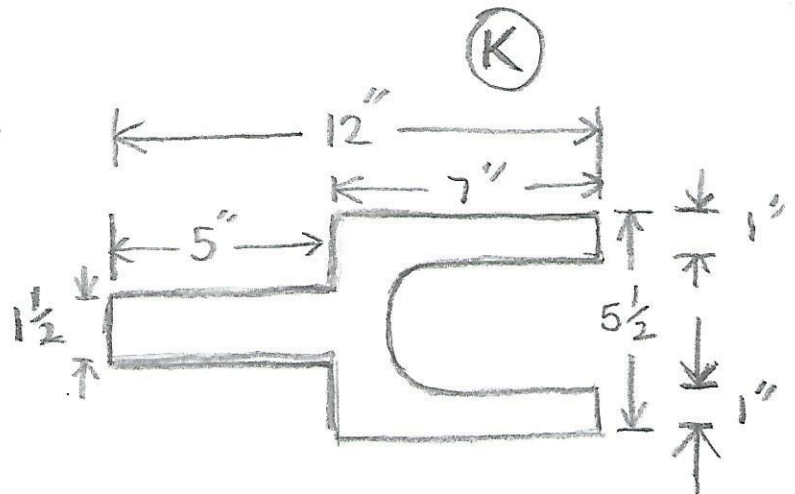
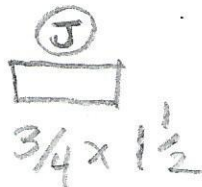
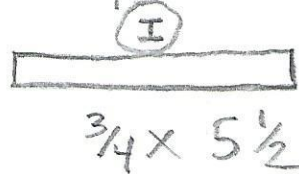
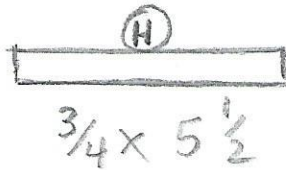
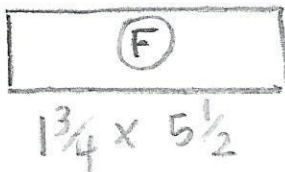


11 PIECES  
 TOTAL

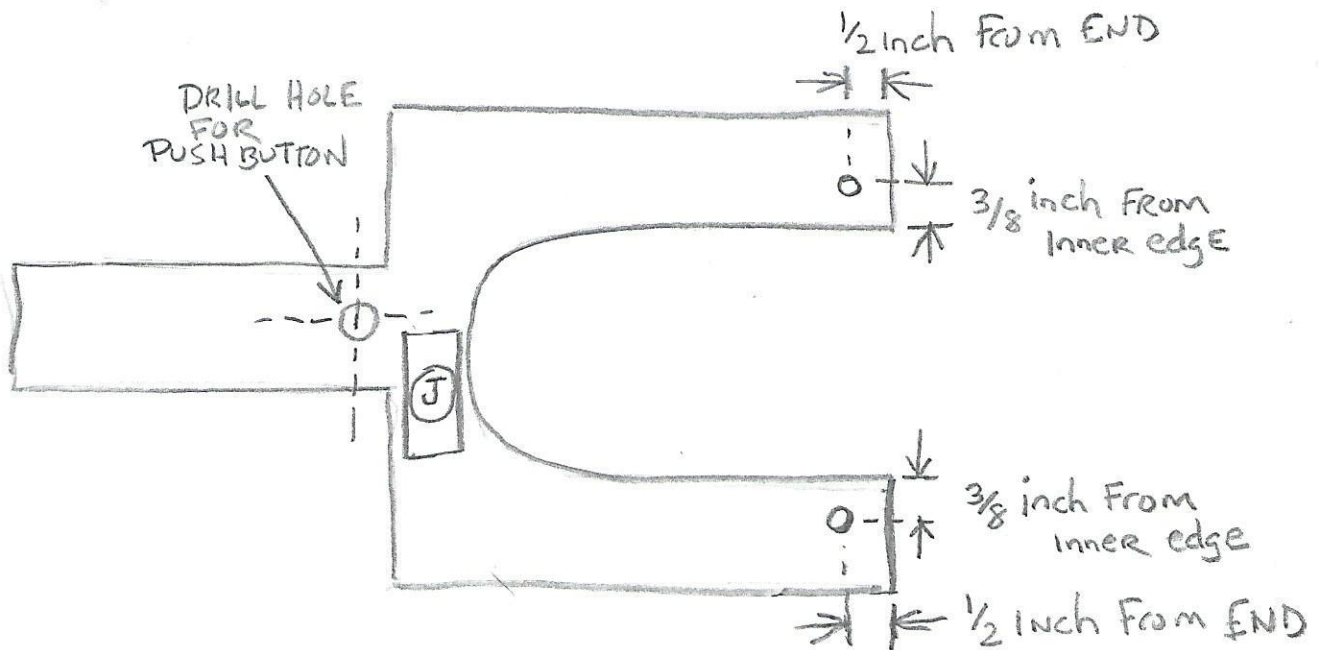
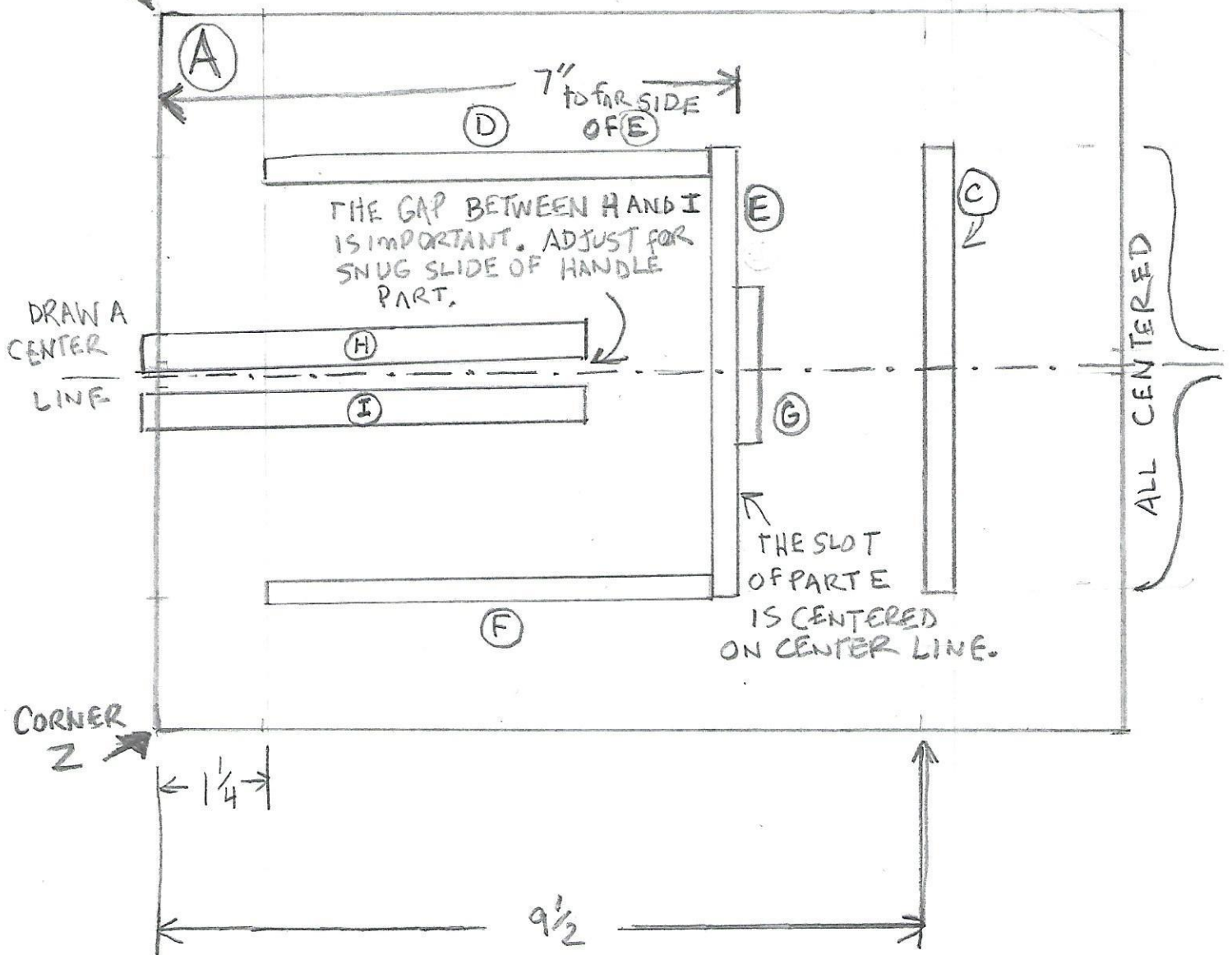


PARTS LIST

- 26 AWG NICHROME WIRE  
 AT LEAST SIX INCHES
- 1 PUSH BUTTON NORMALLY OPEN  
 WHEN PUSHED IT IS CLOSED AND COMPLETES CIRCUIT
- WIRE 18 GAUGE OR THICKER
- 2 BOLTS - 6-32 x  $\frac{3}{4}$  LONG
- 4 NUTS - 6-32
- 8 WASHERS #6
- POWER SUPPLY

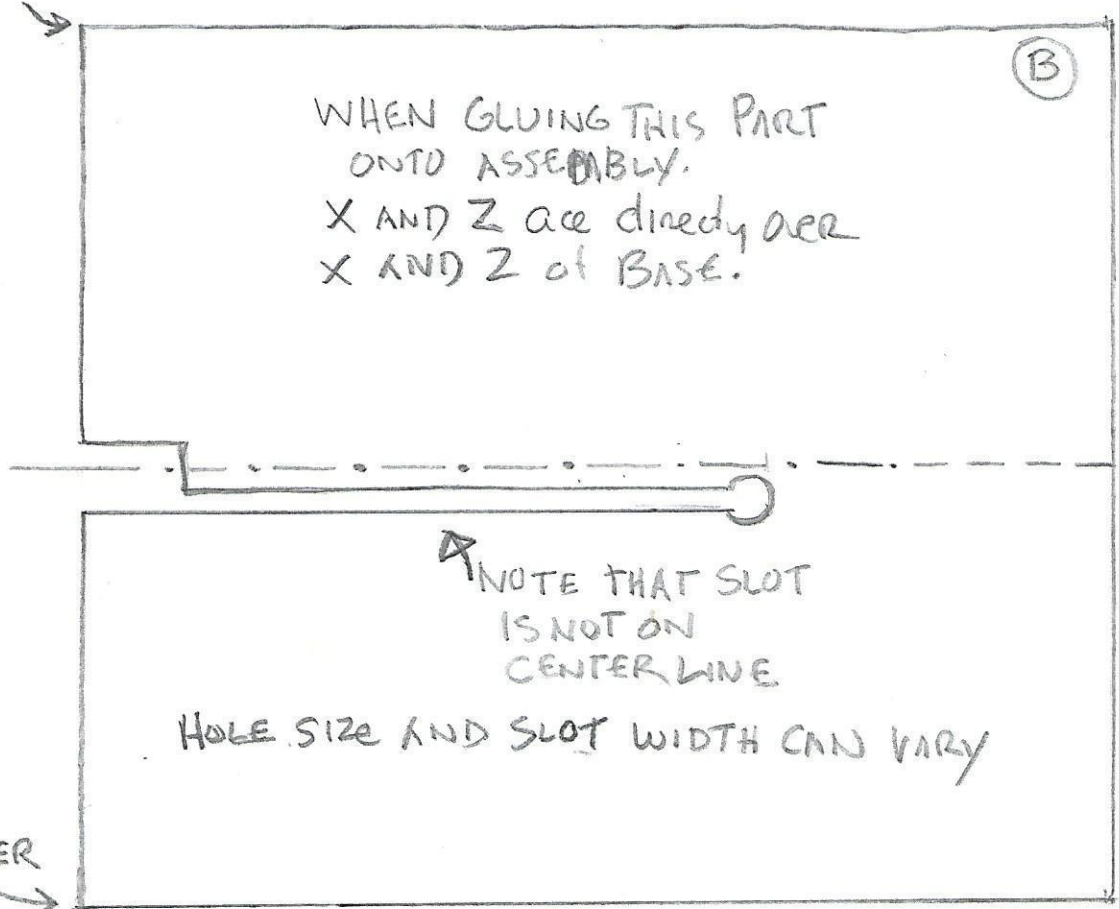
CORNER X

# HOW TO LAYOUT ON BASE



LAYOUT OF TOP PIECE (B)

CORNER X



CORNER Z

