

MARGINALIA CASTLE



IT'S A PAPER CASTLE
BUILT FROM MEDIEVAL DOODLES

Download it, Print it, Put it together

Includes the castle, and 30 medieval figures
Including an army of attacking rabbits



The Marginalia Castle

This is a download, print, and put together project by Starry Night Castle. A portion of the proceeds from this project go toward the building of a real castle. To learn more about that quest visit the website: <http://www.starrynightcastle.com>

About Marginalia

Marginalia are doodles and drawings in the margins of books. This is particularly true of books from the Middle Ages. There is speculation about the origins and the meaning of these margin drawings. And a leading theory is that because of the value and rarity of paper it was considered to be a really good thing to use as much paper as possible and not leave any of it blank. Thus the margins were fully utilized with zany and sometimes hilarious drawings.



And a common theme throughout many medieval manuscripts is that of the evil and combative rabbit. There is an absurdity to it that is just delicious.





Well, this medieval marginalia is the inspiration for the kit you now hold – The Marginalia Castle. All of the characters and even the parts of the castle were derived from authentic marginalia. So, even though you are building a paper castle in modern times you are, in a way, using medieval materials to do it.

Anyway, have fun building your castle. It comes with 30 medieval marginalia figures of all kinds including a small army of angry warrior rabbits, a few dragons, but just one unicorn -naturally.

Starry Night Castle has a series of projects you might be interested in including a paper blacksmith shop, paper scene boxes, and another paper castle entitled “Merry Mead Castle”. You can learn more about them by visiting the Etsy shop here:

<https://www.etsy.com/shop/StormTheCastleCrafts>

MerryMead Castle
A unique paper castle with an observatory.
A n easy to build complete kit with instructions and the parts.



Download it, Print it, Put it together.
Ages 12 and up

\$9.95

An easy to make set unique paper project.
A portion of the proceeds from this project go to
the making of real castles.
Follow along at StarryNightCastle.com

**Starry Night Castle
Blacksmith Shop**



Download it, Print it, Put it together.
Ages 12 and up

\$9.95

An easy to make set unique paper project.
A portion of the proceeds from this project go to
the making of real castles.
Follow along at StarryNightCastle.com

When you are finished making this castle take a picture and send it to me so I can put it on my website and send you a certificate of contribution:

willkalif@comcast.net

Recommended tools and supplies to build this paper castle:

Paper: This project is designed to be printed out on your printer. But, you should use something thicker than normal printer paper. 110# card stock is perfect for this. You can put it right in your printer and print the project directly onto it.



110# card stock is exactly the same as regular printer paper except that it is thicker. It is readily available everywhere including Amazon, Walmart or any office supply store. It is found right next to the printer paper.

You can find this exact card stock on amazon here:

<https://amzn.to/2SdFQqY>



All you need to make this project is a pair of scissors, a straight edge ruler and a glue stick.



A little bit more would be great including a pair of precision scissors, an x-acto knife and a bone folder.

You can use glues other than glue stick but they take more time to set and slow the project up a bit. One of the best glues is beacon 3-in-1 glue. It is a gel so it has moderately good holding power while it dries.

How to save printer ink

You don't have to print up this entire packet. You only have to print up the pages with the castle parts and the figures. Those are pages 14 thru 28 (15 pages) . And then you can read the instructions on your computer, laptop or other electronic device.

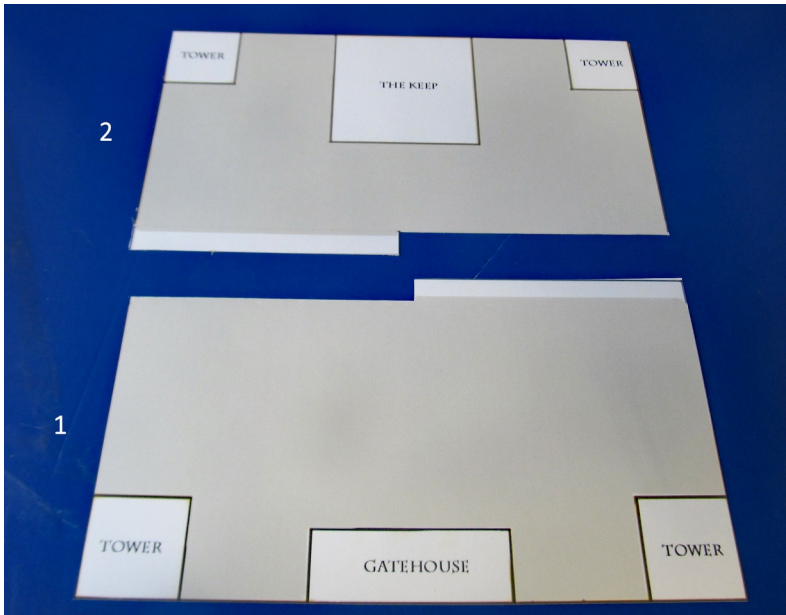
Inspect after printing



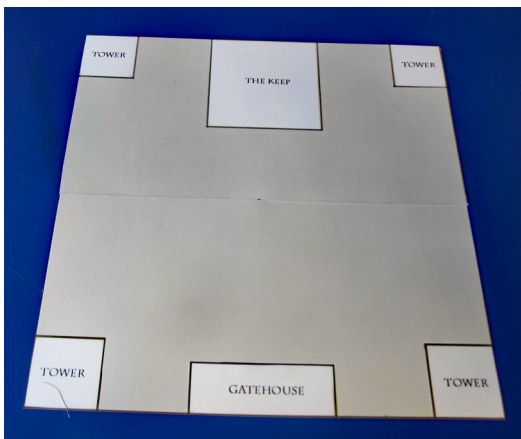
Once you have printed up the parts sheets you should take a look at them to make sure everything printed okay. Is there anything discolored, or any pages missing? There are 12 ½ pages with castle parts and 3 ½ pages with miniature figures.

Let's Begin the Assembly!

You are probably excited to get to cutting out the fun little miniature characters, dragons and killer bunnies. But, I recommend you wait. It's not great to have a whole army of characters without a castle to keep them in!

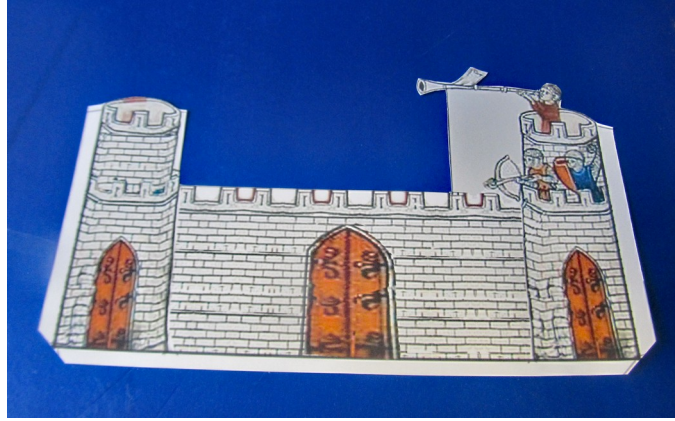


Cut out parts 1 and 2.

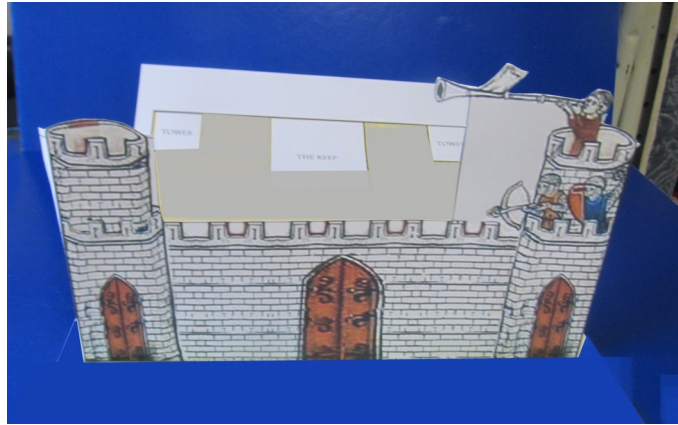


These two parts interlock and are glued together to form the base of the castle. The blank flap on each piece goes under the other piece. Keep them both straight as you glue them. And, the line between them will almost disappear.

Cut out part 3. This is the front of the castle. Use a straight edge to fold the three flaps. One flap is on the left, one flap is on the right, and one flap is on the bottom.

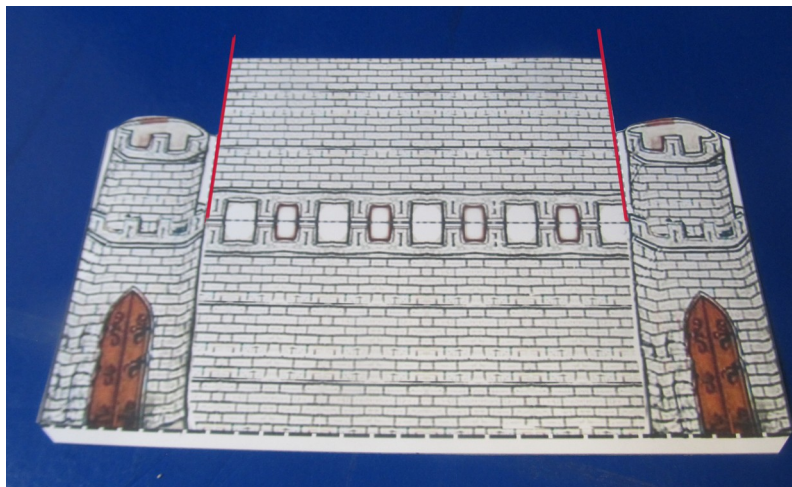


Glue it via the bottom flap to the base of the castle on the front edge where the gatehouse is.

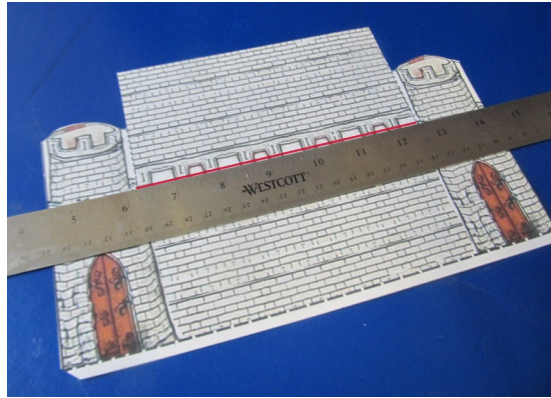


Cut out parts 4 and 5. These two parts are identical. But one will go on the left of side of the castle while the other goes on the right side of the castle.

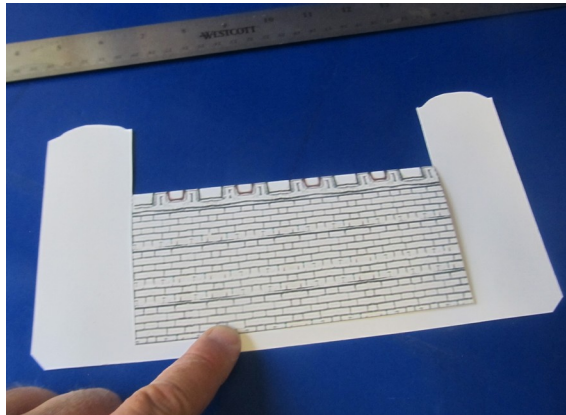
Notice that in this next picture I had added red lines. These lines show you a couple of cuts you could easily miss. Make sure you add these cuts .



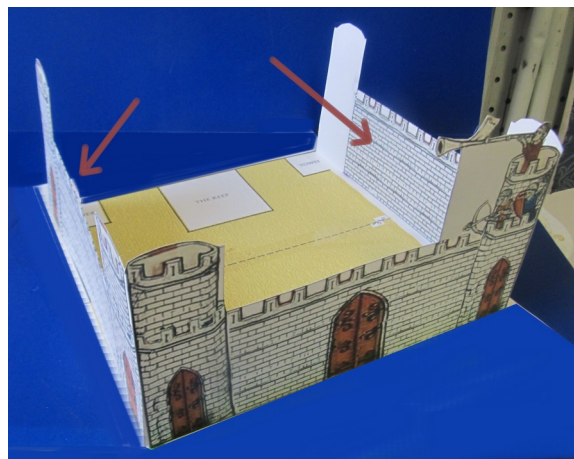
Place a straight edge right on the dashed line going from tower to tower. And fold it/crease it right along that center line where you see the red in the picture. Do not fold or crease on those round towers.



Fold that part right over the back of the piece and glue it down like this. Do this to both pieces.



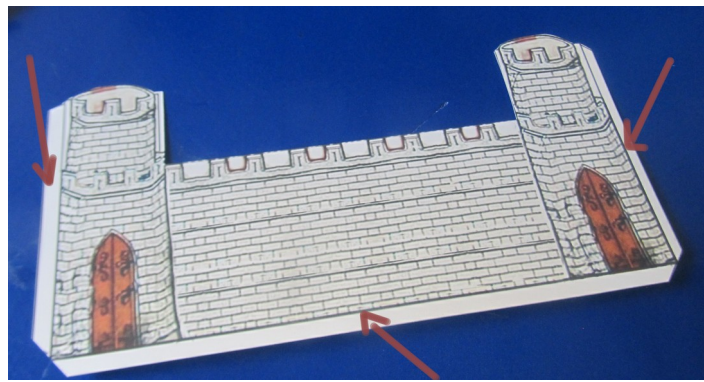
Then glue those pieces to the base and the flaps on the front piece. One on the left and one on the right. They are identical so it doesn't matter which is which.



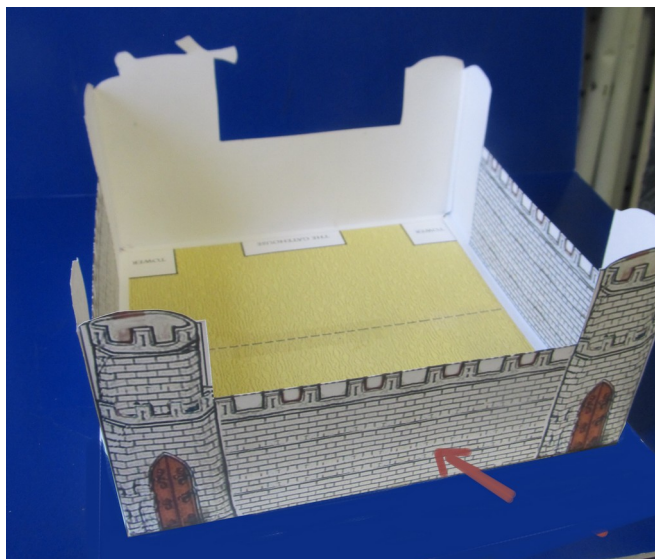
Repeat this process with the back piece (part 6). You cut it out being sure to slit it down to the fold line. Then crease it, fold it over, and glue the flap over to the back of the piece like this. It's very similar to the side pieces.

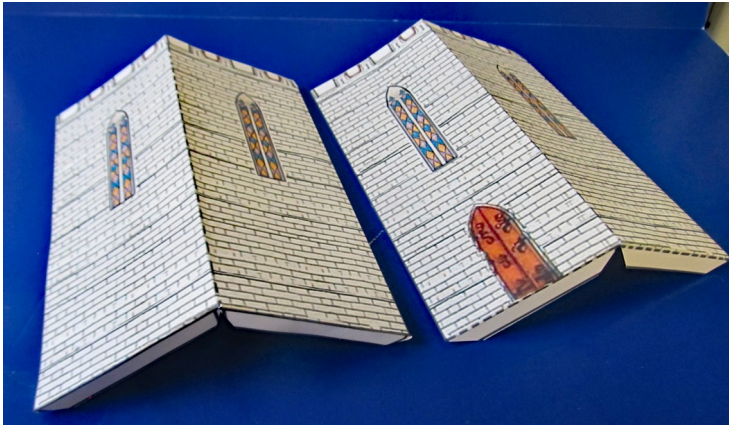


With a ruler crease the three flaps.

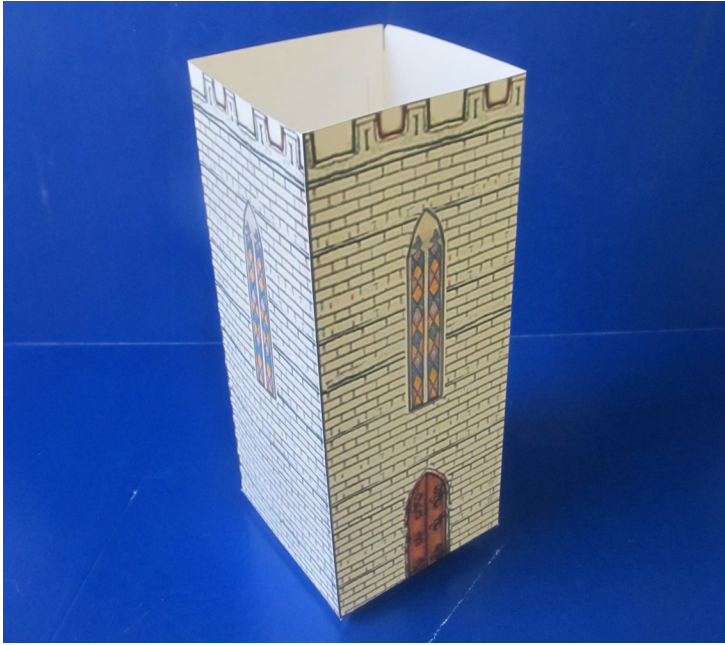


And glue it in place to the base and to the left and right sides. The outer walls of your castle is built! Yay!

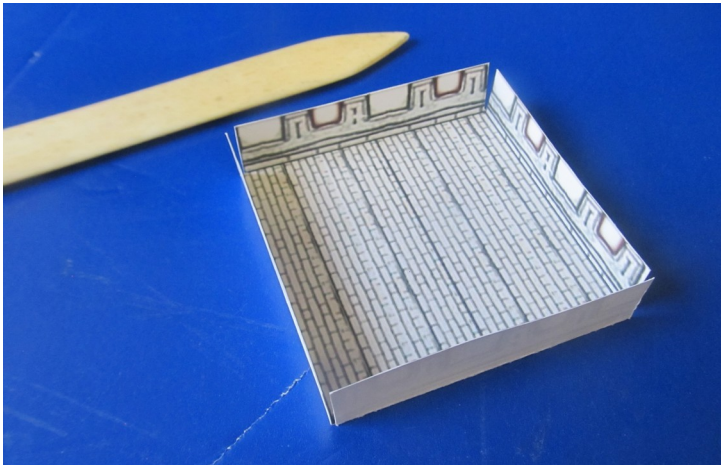




Cut out the two pieces that make up the keep (7 and 8) and do all the creasing with a rule. Each piece has four creases - two on the bottom flaps, one on a side flap, and one right down the middle on the dashed line.



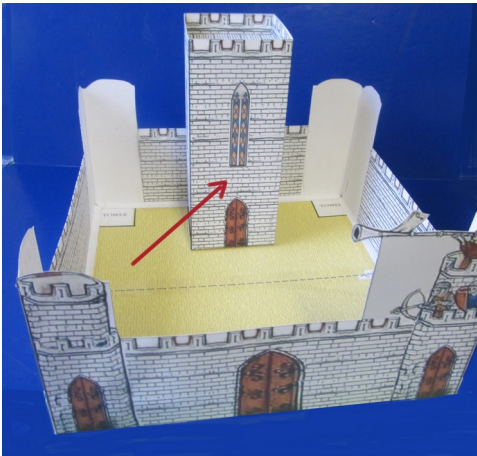
Glue the two pieces together to form the rectangular shape.



Cut out the keep top and fold all four flaps up like this. (part 9)

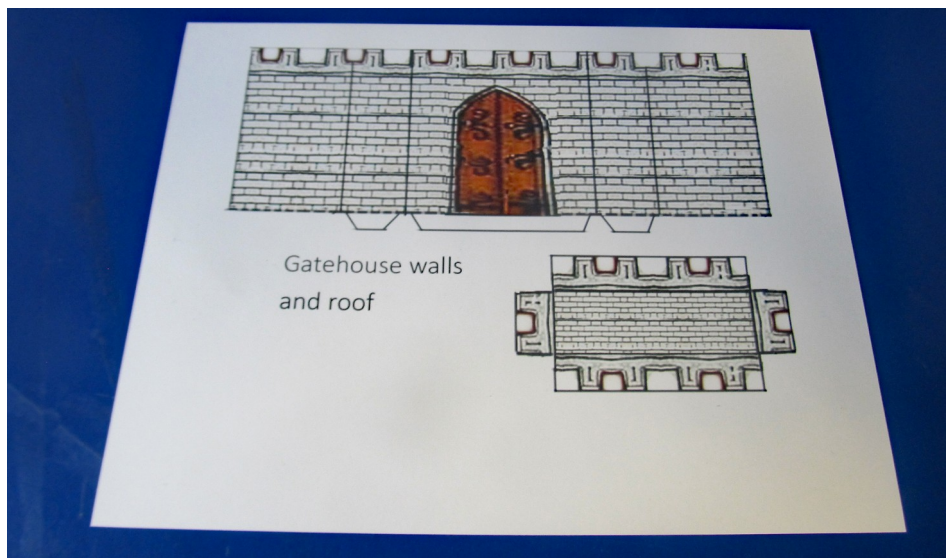


Then glue it into the top of the tower. Double check you have the top of the tower! The top of the tower has no flaps. The flaps are on the bottom so you can glue it to the castle base.



Glue it to the base and the back wall. Be sure to orient it right; there is only one door on the keep and it should face forward; toward the front of the castle like you see in the picture.

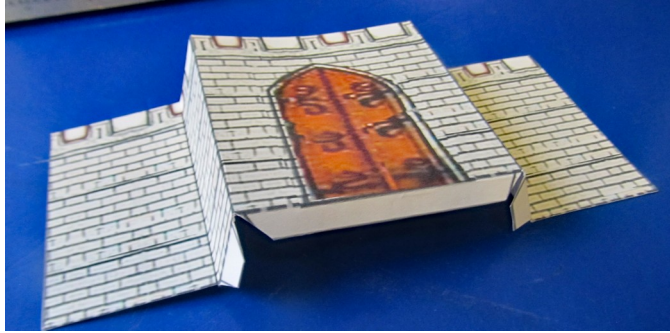
Cut out the two pieces that make up the Gatehouse (Parts 10 and 11). One piece is the gatehouse walls (10) and the other piece is the gatehouse roof (11).



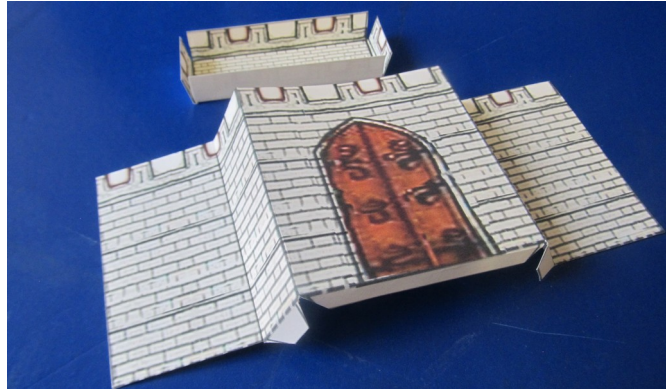
There are three flaps on the bottom edge of the gatehouse walls section. Crease them with a straight edge.

There are four vertical lines on the gatehouse. Crease them also.

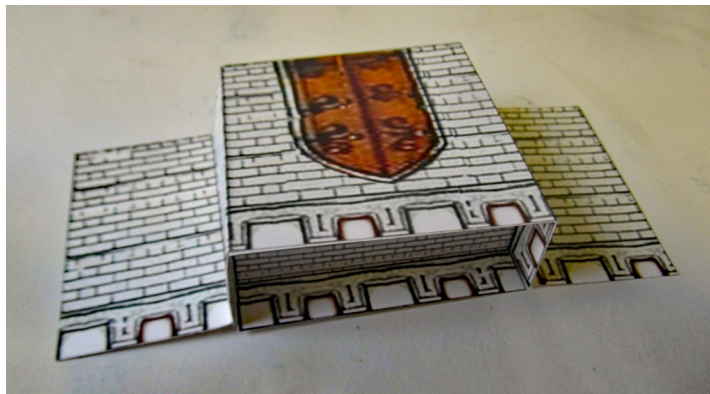
And fold it into shape like this:



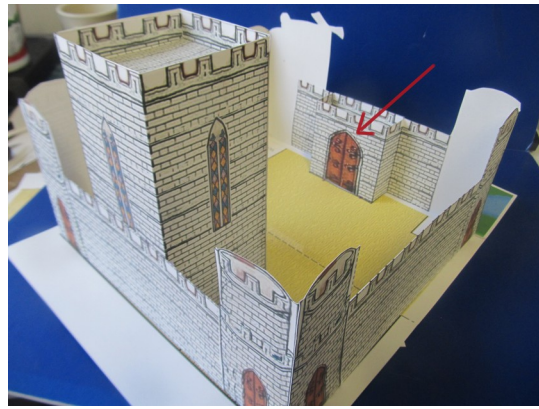
Cut out and fold the gatehouse roof like this.



Then glue the roof into the gatehouse.



And finish the gatehouse by gluing it against the front wall of the castle.

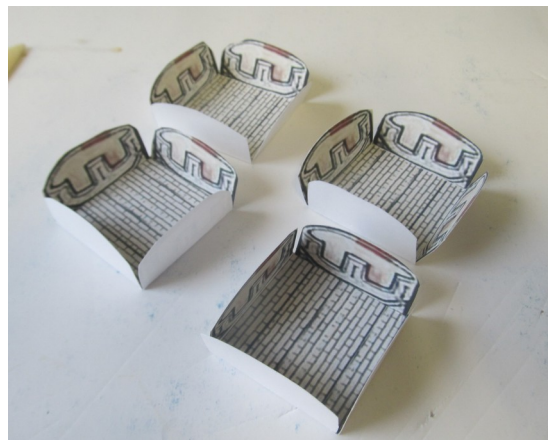


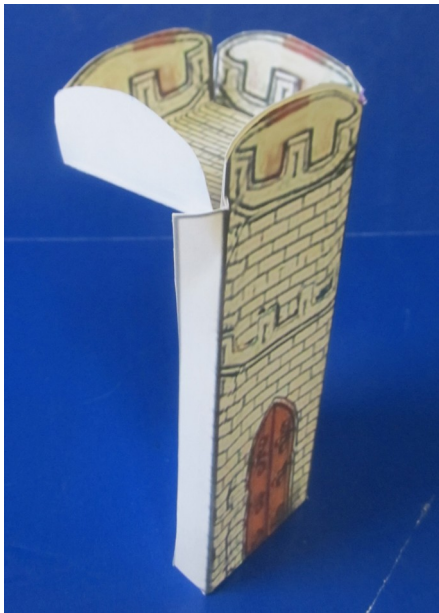
Okay! The only thing remaining is the four corner towers. Let's make them!

Cut out the four towers and crease them with a ruler or straight edge. Each tower has four flaps and one vertical center line crease.

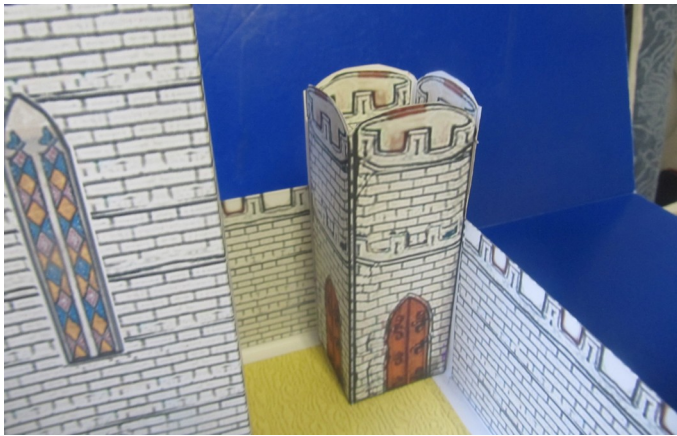


Cut out and crease the four tower tops like this.

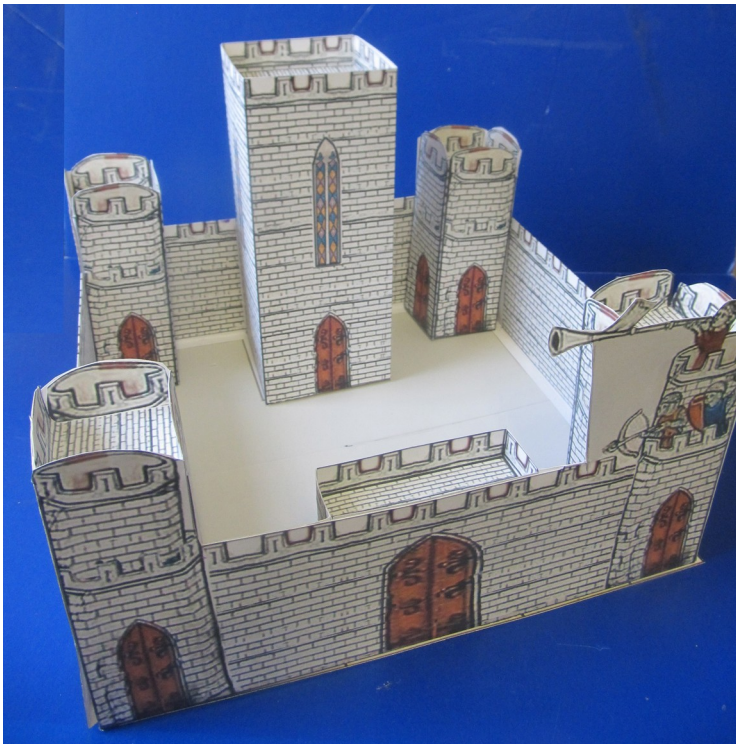




Glue the four tower tops into the towers like this.



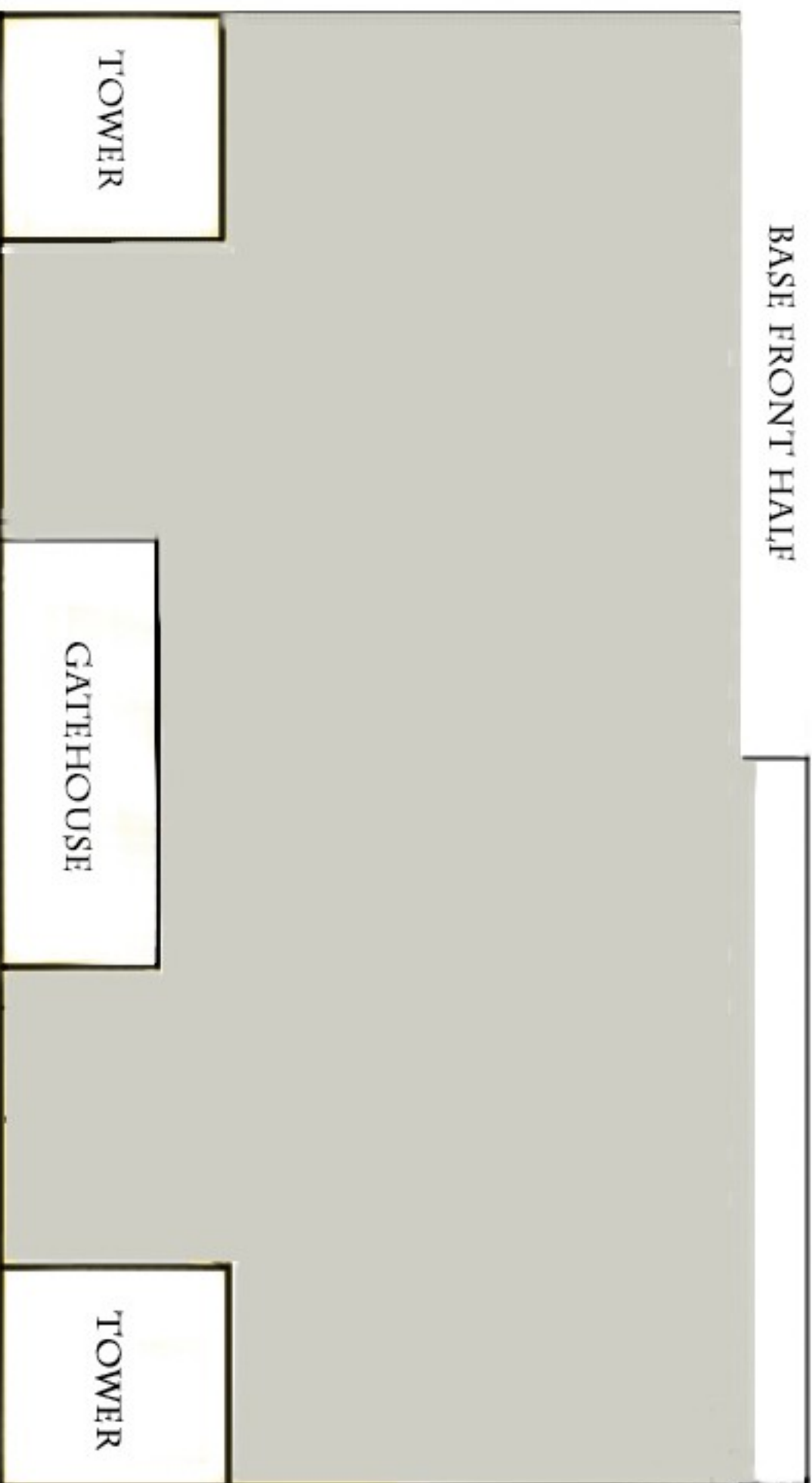
And glue them into the four corners of the castle.



And that's it! You have built a castle. And not just any castle. You built a marginalia Castle!

1

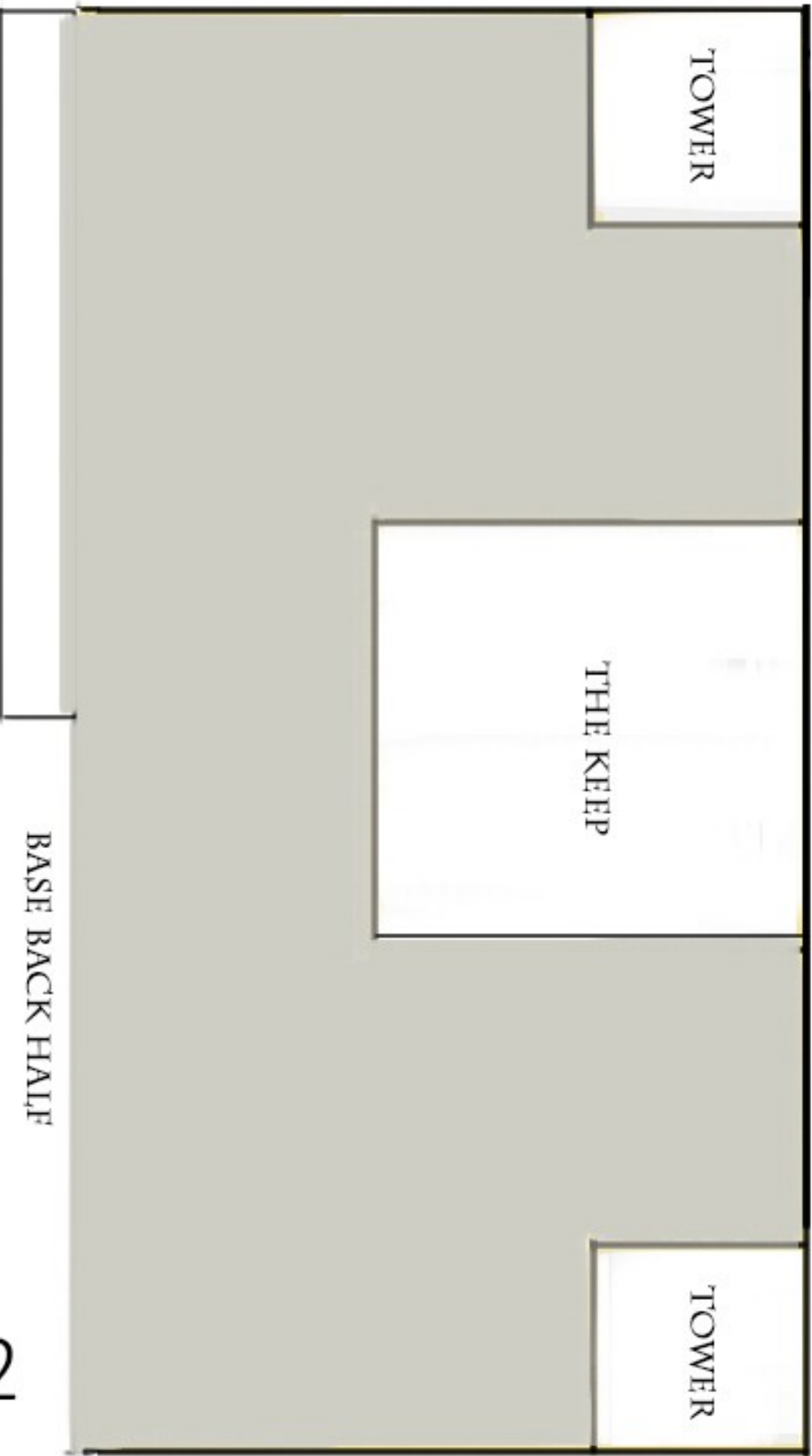
BASE FRONT HALF



TOWER

GATEHOUSE

TOWER



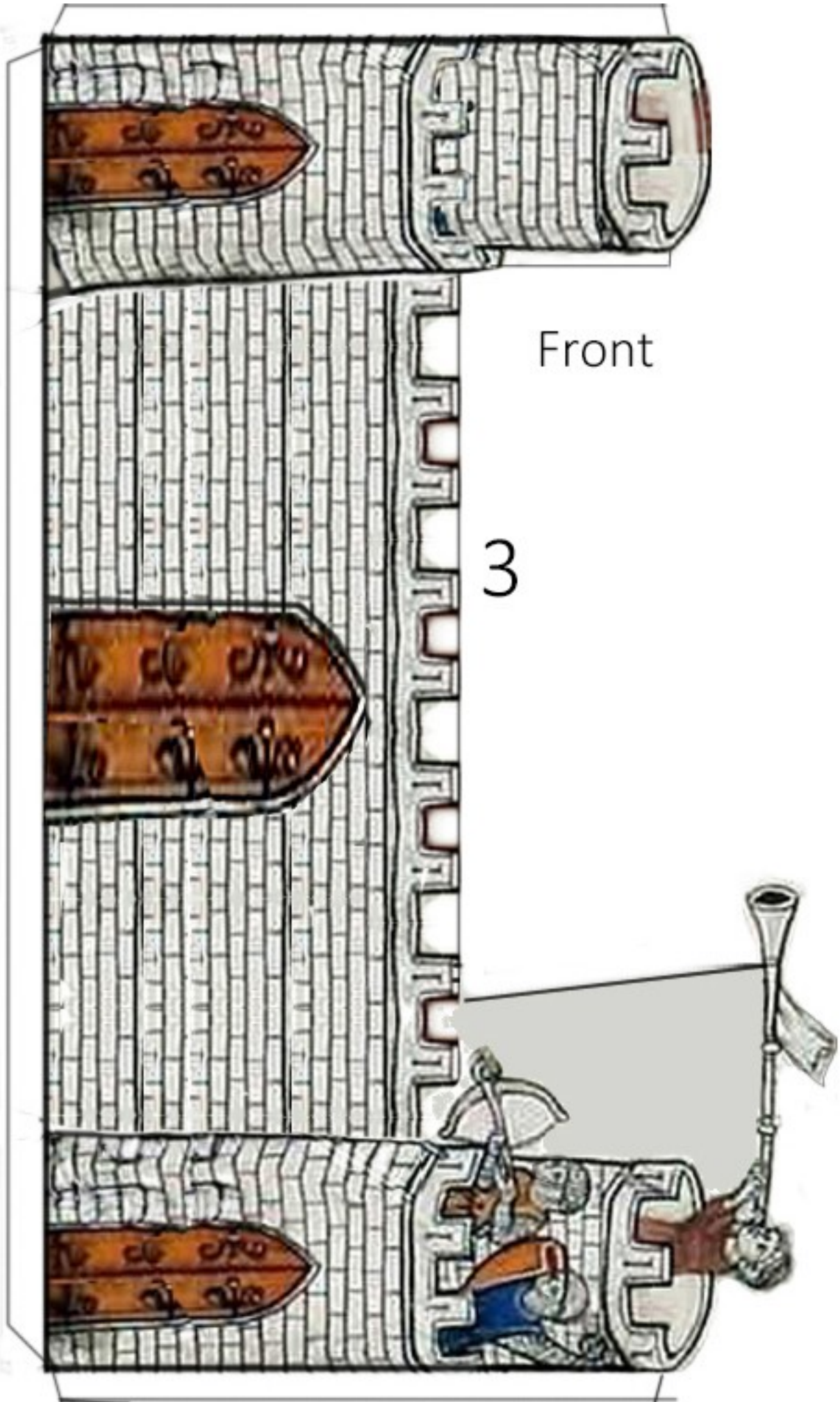
TOWER

THE KEEP

TOWER

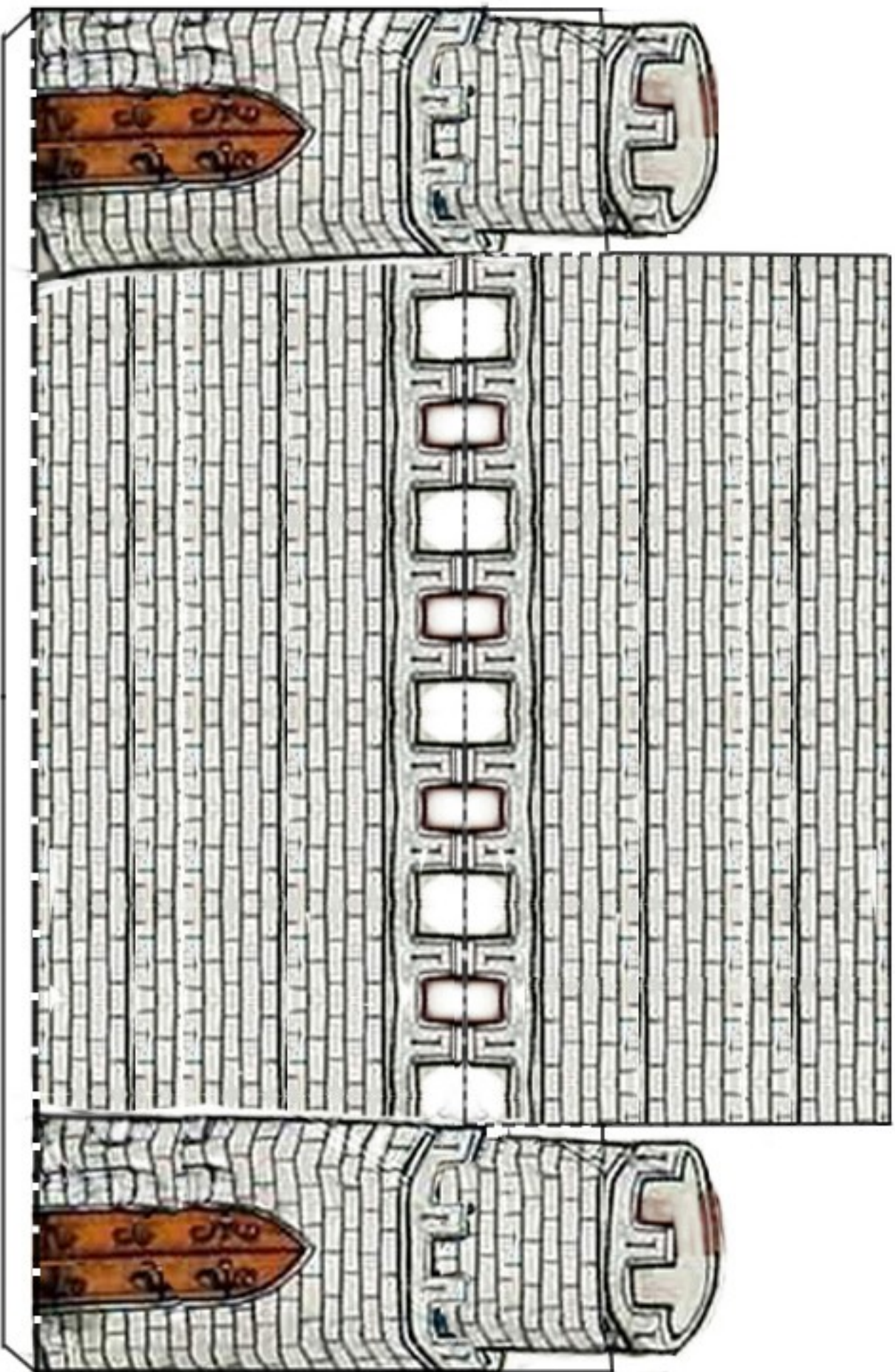
BASE BACK HALF

2



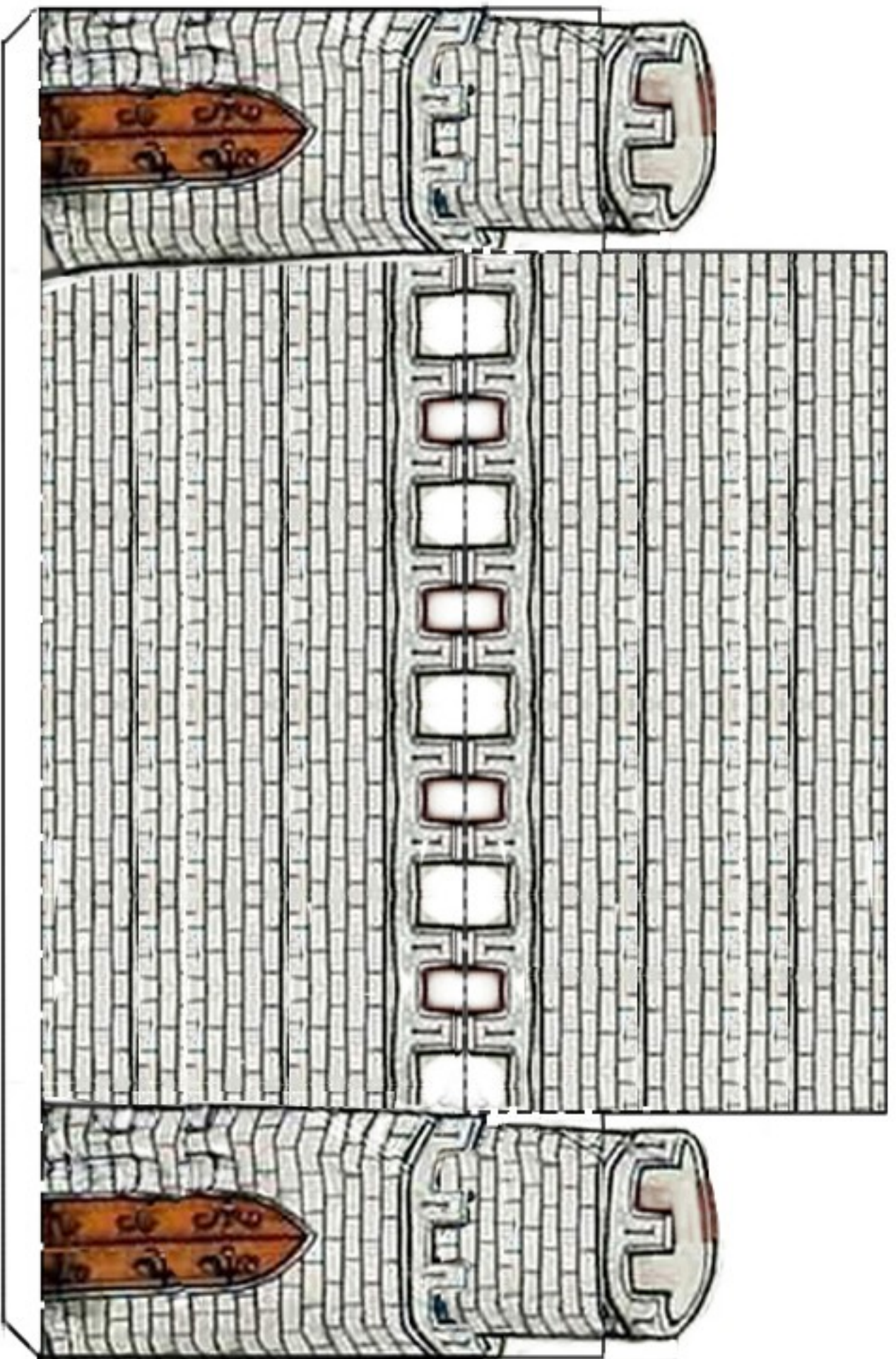
Front

3



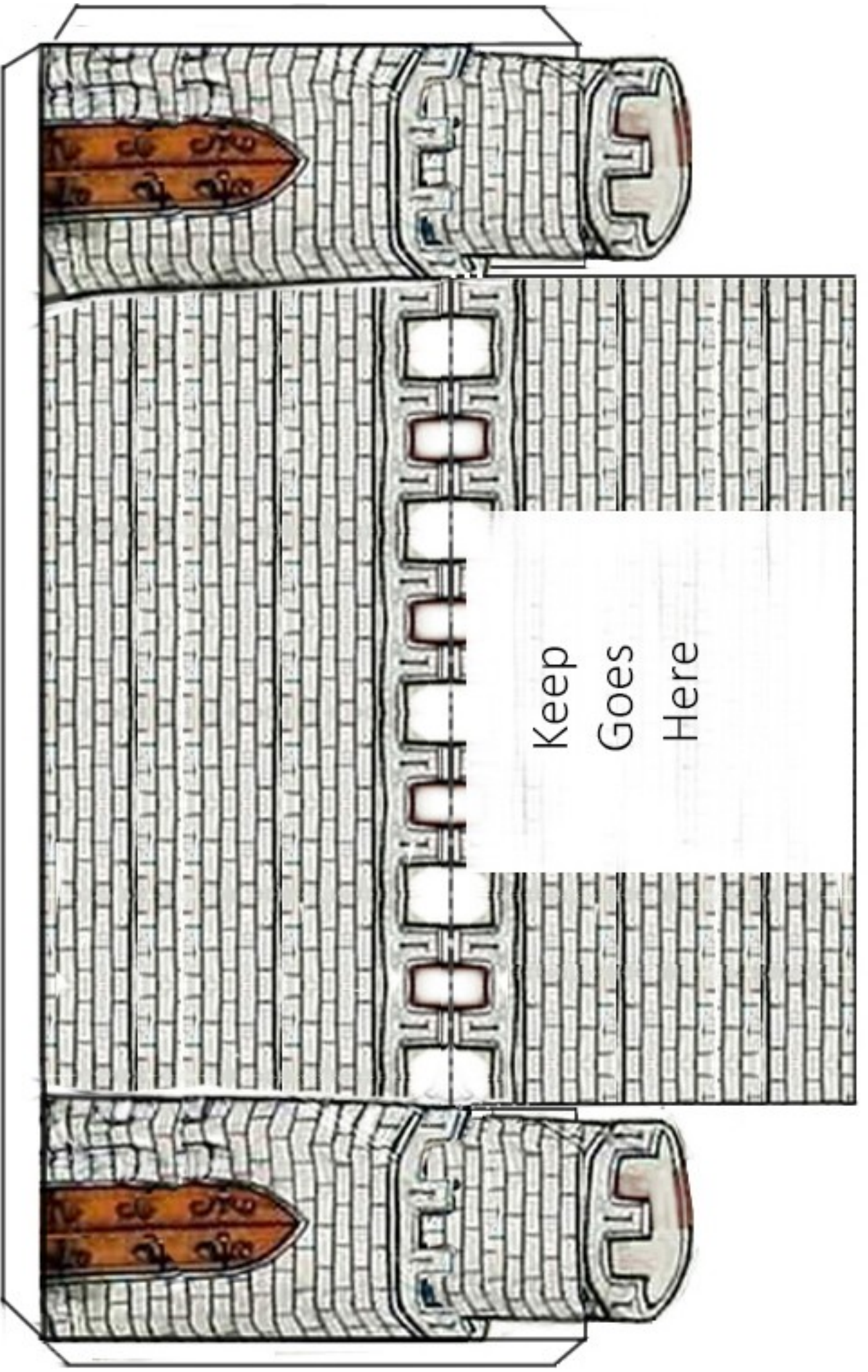
P-
Left Side

4



Right Side

5

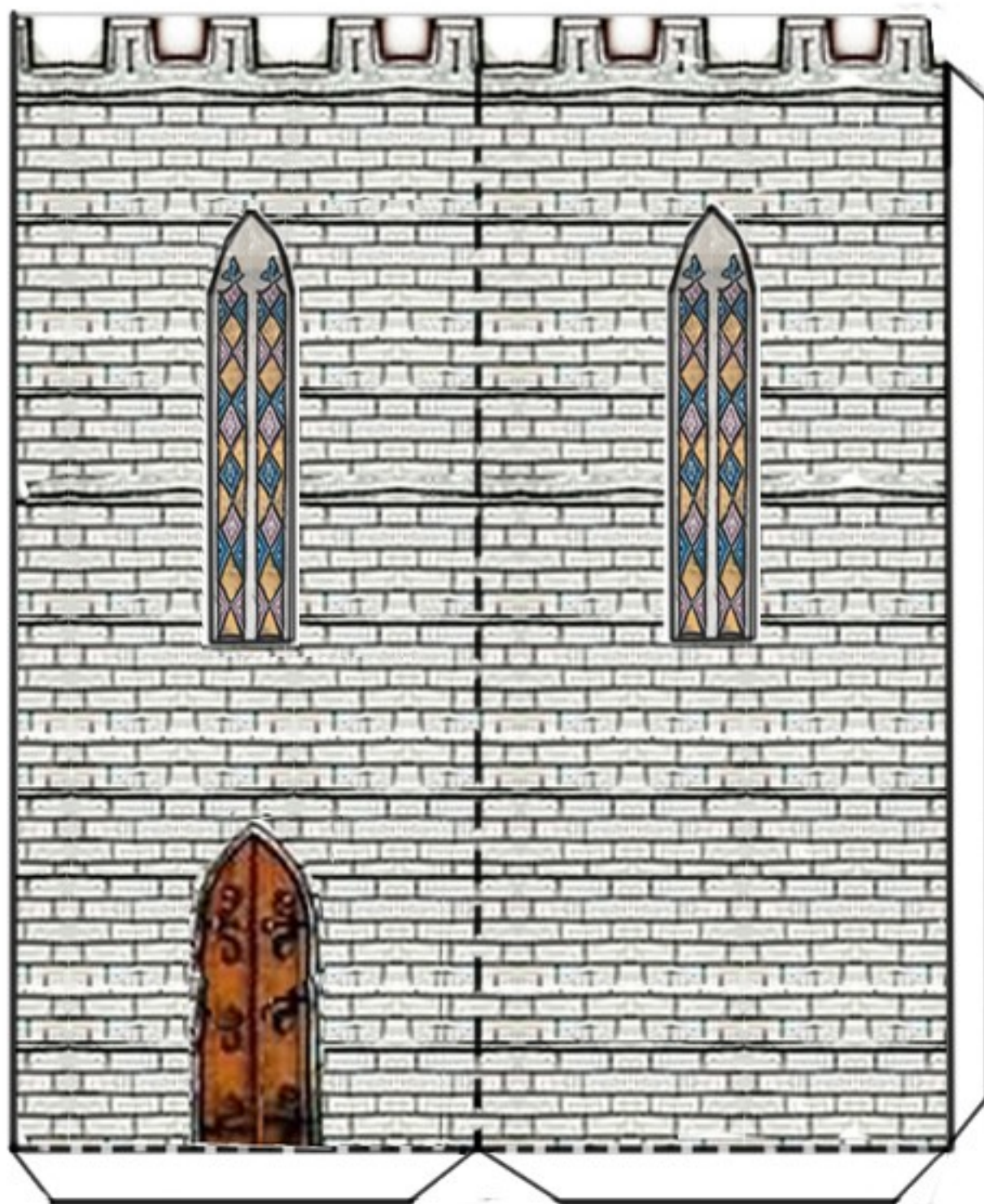


Back

9

Keep
Goes
Here

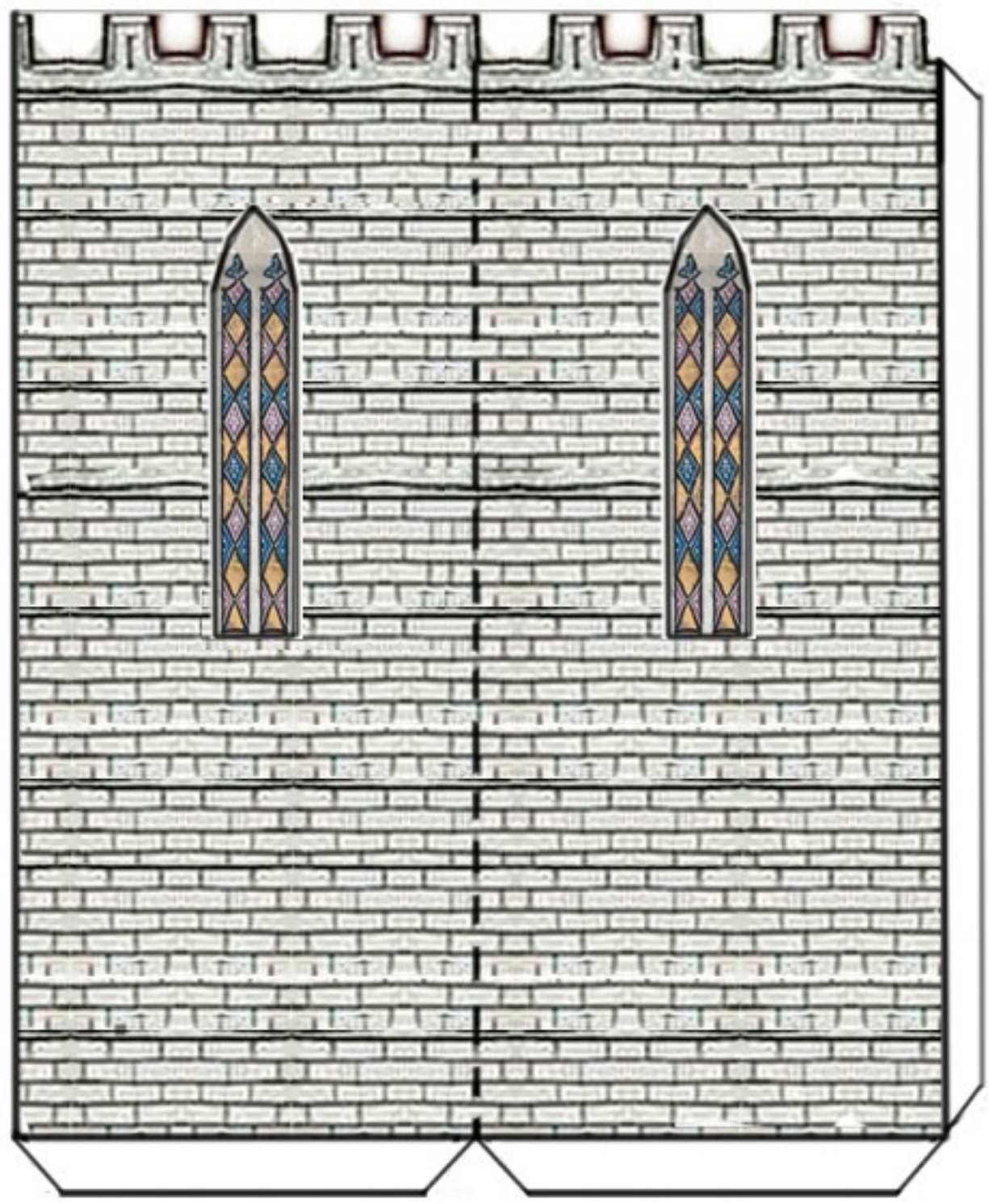
Keep half

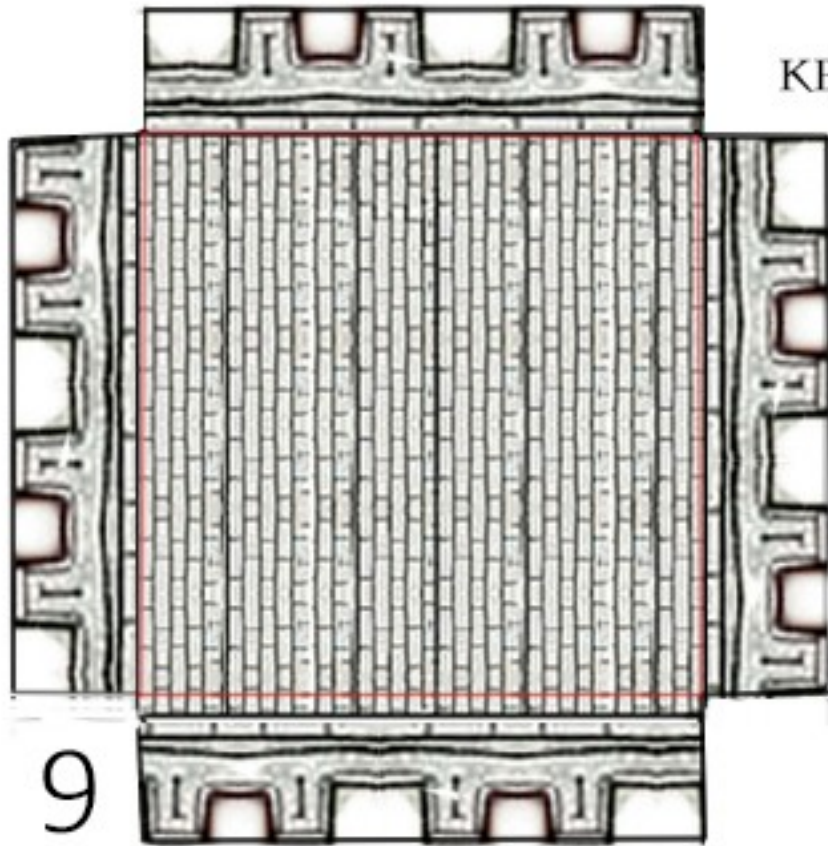


7

Keep Half 2

8



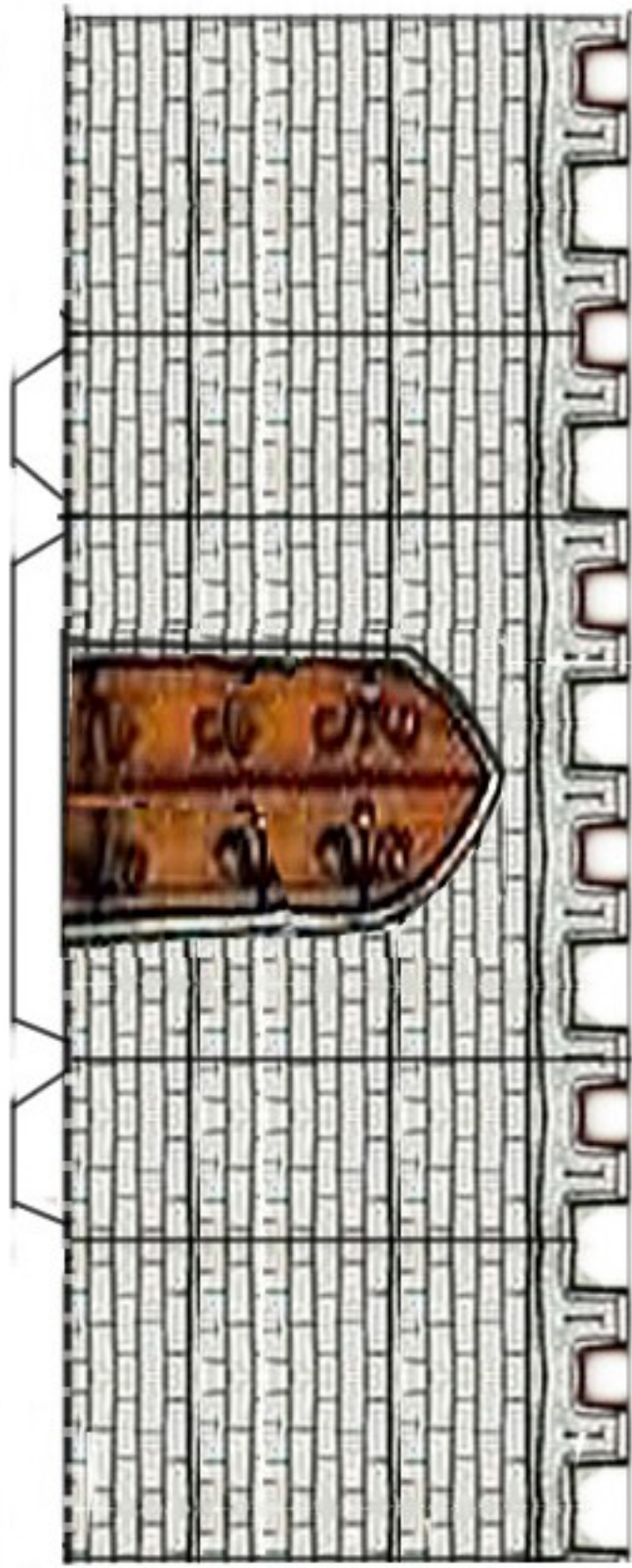


KEEP ROOF



MARGINALIA,
CHARACTERS



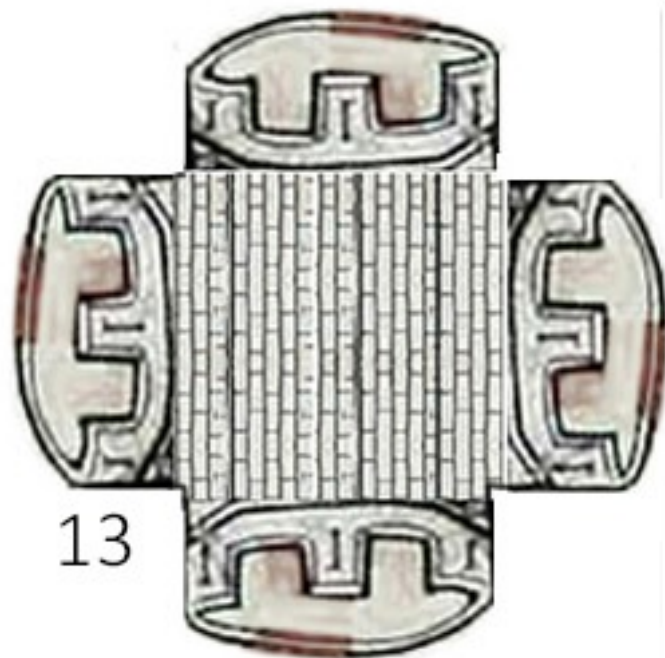


10 Gatehouse walls
and roof



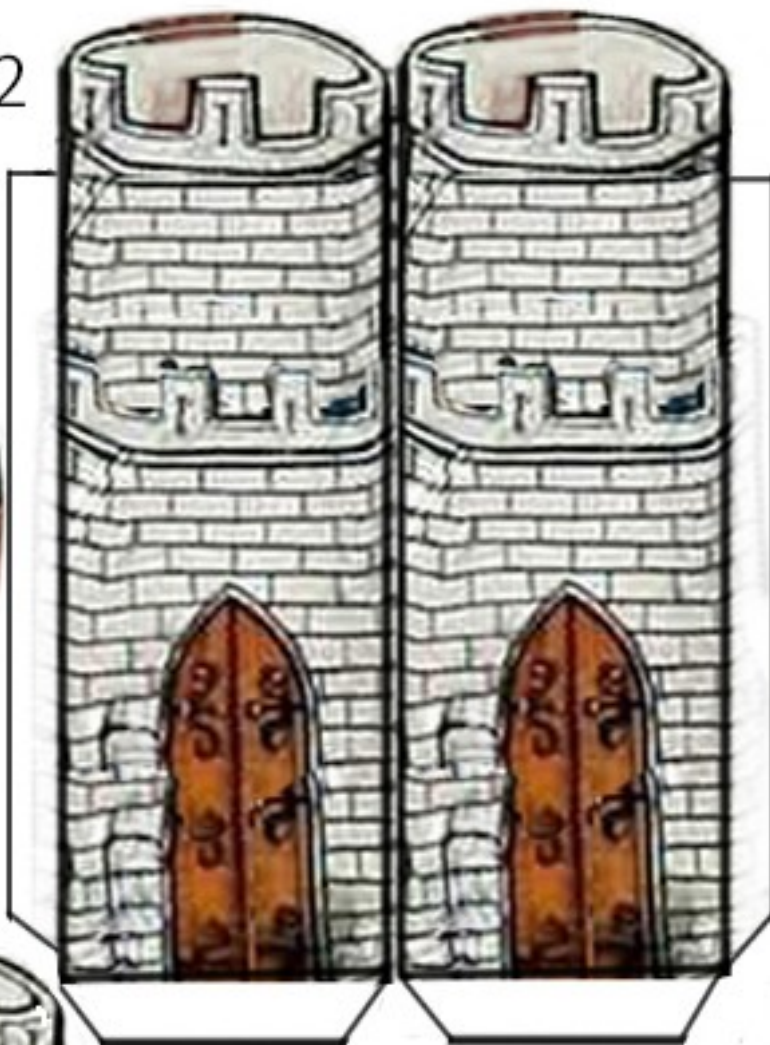
11

TOWER ROOF



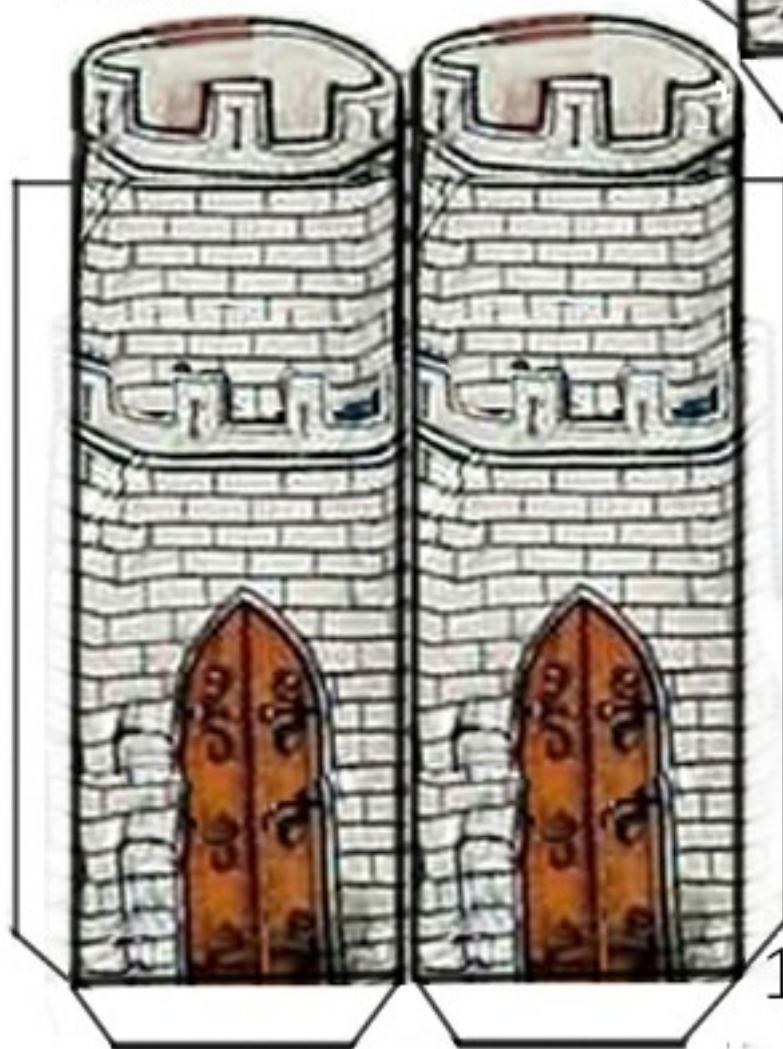
13

12



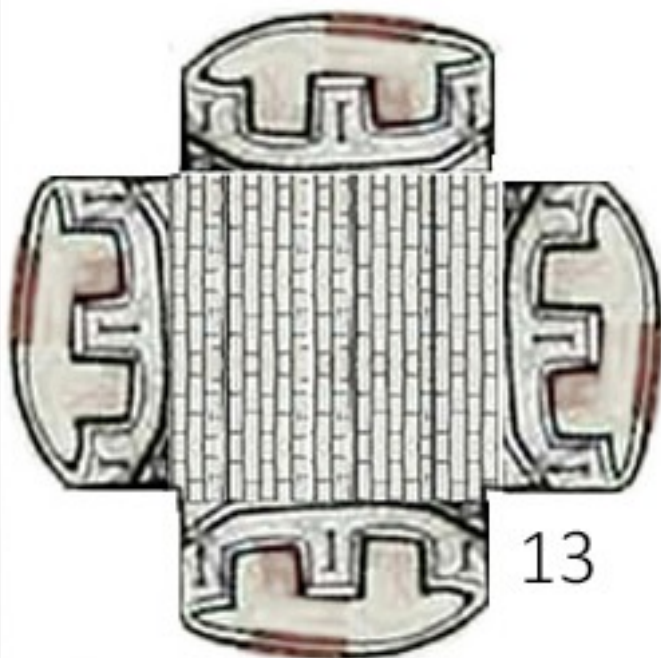
TOWER

TOWER



12

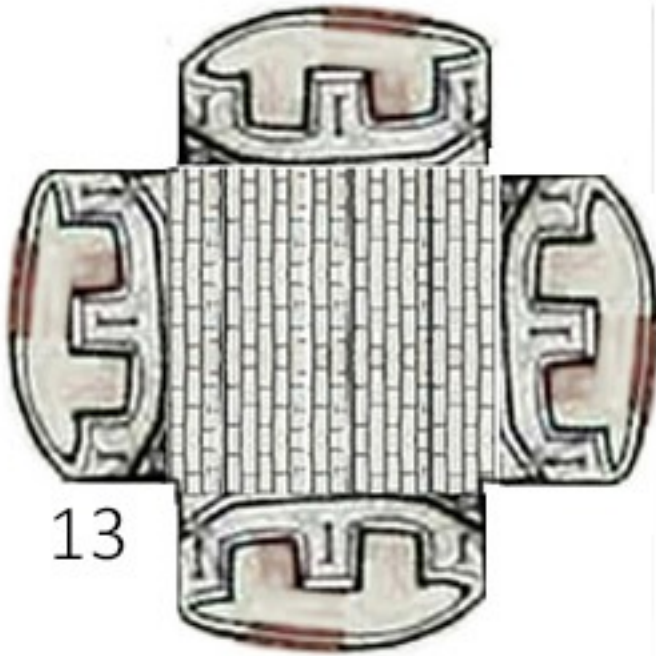
TOWER ROOF



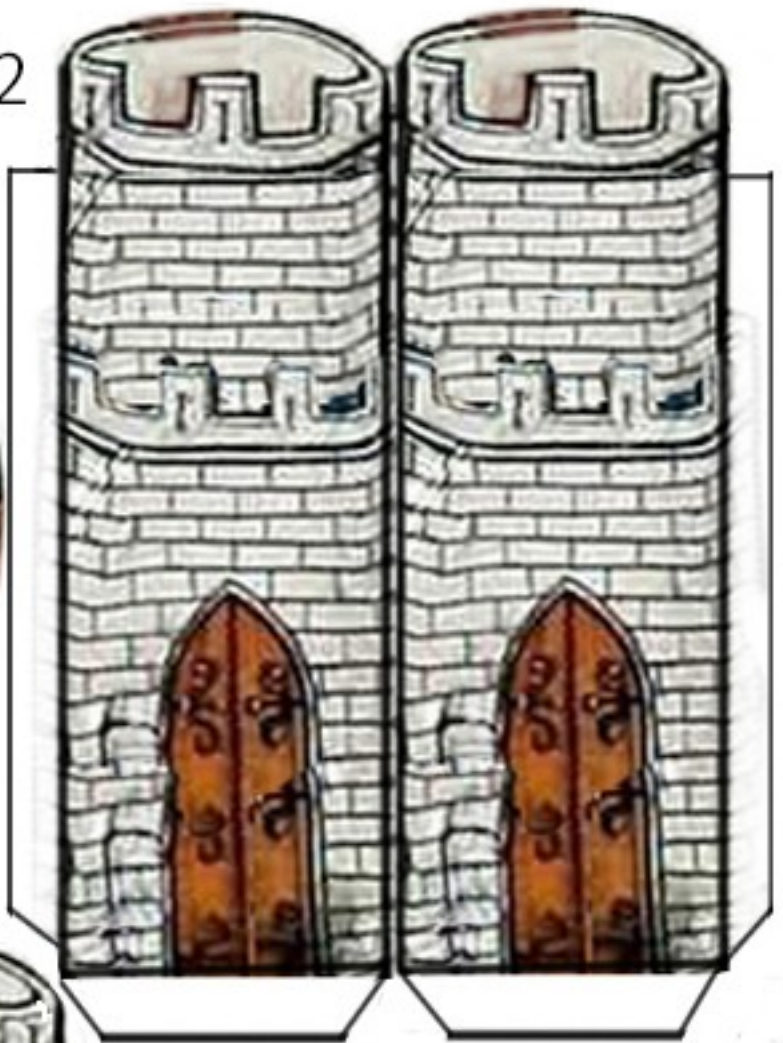
13

12

TOWER ROOF

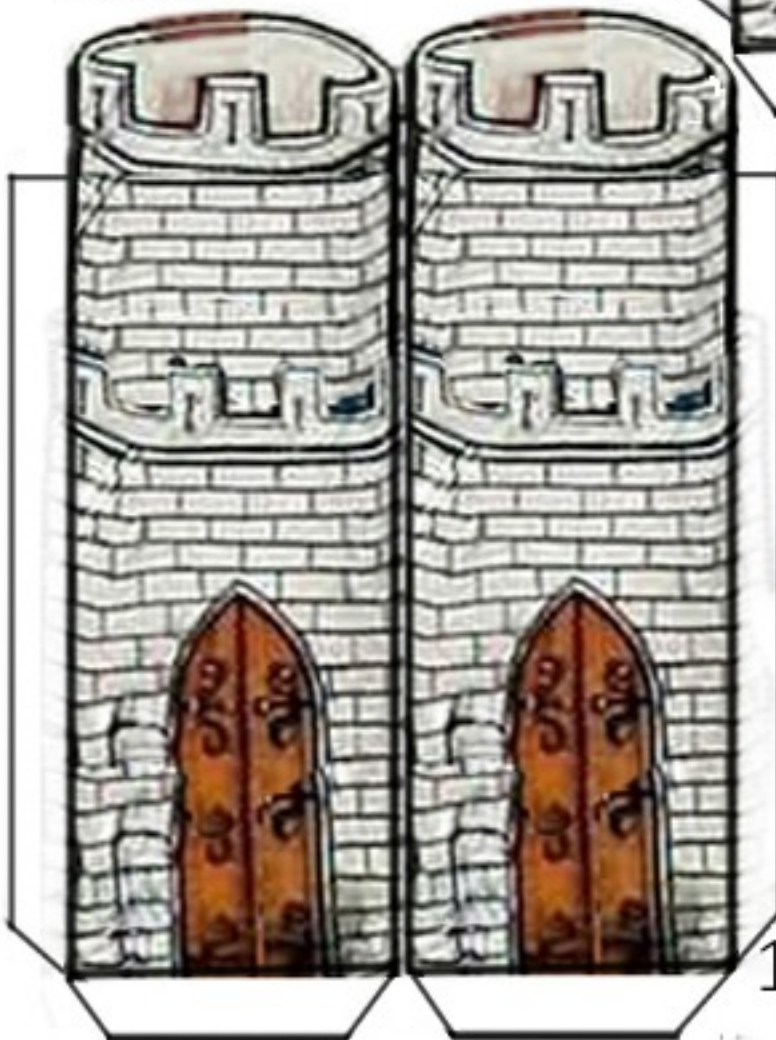


13

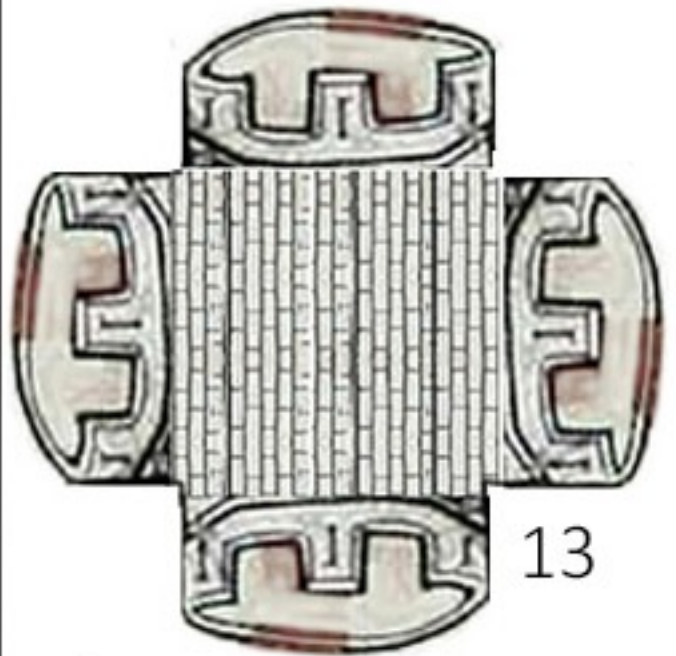


TOWER

TOWER



12



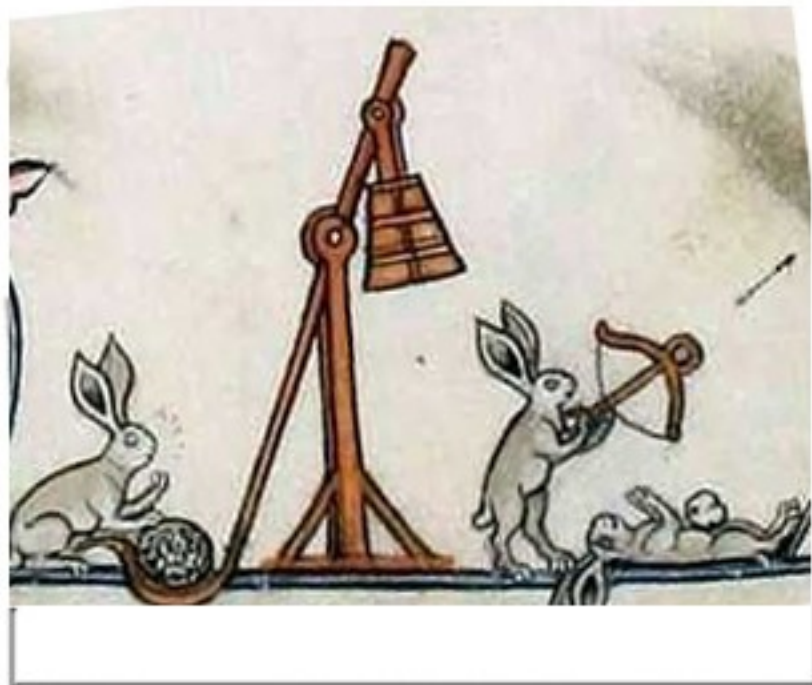
13

TOWER ROOF





ARMY
OF
ATTACKING
BUNNIES





DRAGONS AND A UNICORN



Thanks and Learn more



We, (You and I) are on an epic adventure to build a castle. And when you purchased this paper castle kit you have contributed to the building of the castle. Thank you! But there is a lot more to be learned and a lot more to do.

If you want to get in on the epic quest and the big adventure. Or you just want to learn more about the castle here are some resources for you:

To adventure more:

Website:

<http://www.starrynightcastle.com>

Youtube:

<https://www.youtube.com/channel/UChX2RorySCzm0KEHX6QRGdQ>

Patreon:

<https://www.patreon.com/starrynightcastle>

Etsy:

<https://www.etsy.com/shop/StormTheCastleCrafts>

Facebook:

<https://www.facebook.com/starrynightcastle>